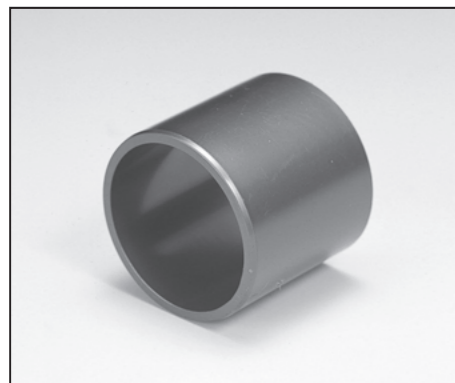


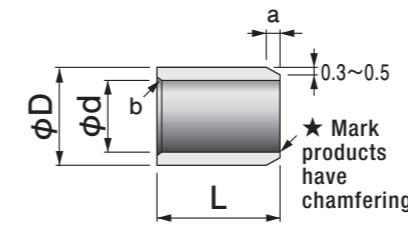
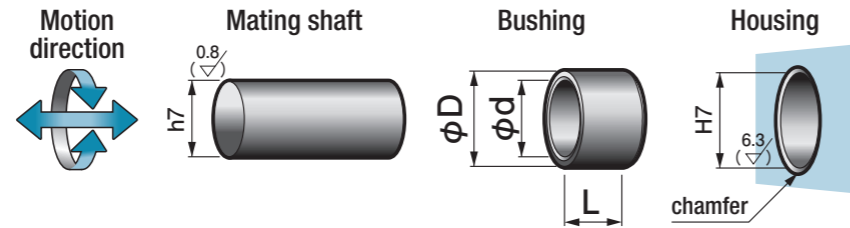
80B Oiles 80 Bushings



Specify Part No. by required I.D. and length.
(e.g.) I.D. is 15mm and length is 10mm.

80B - 1510

Part No.



a: Chamfering for O.D.

φd	~6	~35	~50
a	*	1	2

(mm)

b: Chamfering for I.D.

φd	~10	~35	~40	~50
b	C0.3	R0.4	R0.6	R0.8

(mm)

※: O.D. chamfering for the bushing I.D. of φ6 or smaller

L	2	~4	~10
a	0.3	0.5	1 (Note)

(mm)

(Note) 80B-0406 : 0.5, 80B-0604 : 1

- The Oiles 80 bushings are injection-molded.
- The inner diameter tolerances are the values after pressing into a ring gauge of $\phi D \pm 0.002$.
- A stopper is needed at the temperature of 0°C or less, since the bushing is dislocated due to thermal shrinkage.

Shaft Length	Housing diameter	I.D.		O.D.		Length L Tolerance $-\frac{0}{-0.3}$ (◎ 80B-1510 Tolerance $-\frac{0}{-0.5}$)							
		h7 Tolerance	H7 Tolerance	φd Tolerance	φD Tolerance	2	3	4	5	6	8	10	
2	4	$\frac{0}{-0.010}$	$\frac{+0.012}{0}$	$\frac{2}{+0.065}$	$\frac{4}{+0.107}$	0202	0203	0204					
3	5	$\frac{0}{-0.010}$	$\frac{+0.012}{0}$	$\frac{3}{+0.080}$	$\frac{5}{+0.107}$		0303	0304	0305	0306			
4	6	$\frac{0}{-0.012}$	$\frac{+0.012}{0}$	$\frac{4}{+0.095}$	$\frac{6}{+0.107}$		0403	0404	0405	0406			
5	7	$\frac{0}{-0.012}$	$\frac{+0.015}{0}$	$\frac{5}{+0.095}$	$\frac{7}{+0.157}$		0503	0504	0505	0506	0508		
6	8	$\frac{0}{-0.012}$	$\frac{+0.015}{0}$	$\frac{6}{+0.095}$	$\frac{8}{+0.157}$			0604	0605	0606	0608	0610	
7	9	$\frac{0}{-0.015}$	$\frac{+0.015}{0}$	$\frac{7}{+0.095}$	$\frac{9}{+0.157}$				0705	0706	0708	0710	
8	10	$\frac{0}{-0.015}$	$\frac{+0.015}{0}$	$\frac{8}{+0.120}$	$\frac{10}{+0.157}$				0805	0806	0808	0810	
9	11	$\frac{0}{-0.015}$	$\frac{+0.018}{0}$	$\frac{9}{+0.120}$	$\frac{11}{+0.193}$				0905	0906		0910	
10	12	$\frac{0}{-0.015}$	$\frac{+0.018}{0}$	$\frac{10}{+0.120}$	$\frac{12}{+0.193}$				1005	1006	1008	1010	
12	14	$\frac{0}{-0.018}$	$\frac{+0.018}{0}$	$\frac{12}{+0.120}$	$\frac{14}{+0.193}$					1206	1208	1210	
14	16	$\frac{0}{-0.018}$	$\frac{+0.018}{0}$	$\frac{14}{+0.120}$	$\frac{16}{+0.193}$							1410	
15	17	$\frac{0}{-0.018}$	$\frac{+0.018}{0}$	$\frac{15}{+0.120}$	$\frac{17}{+0.193}$							◎1510	
16	18	$\frac{0}{-0.018}$	$\frac{+0.018}{0}$	$\frac{16}{+0.120}$	$\frac{18}{+0.193}$							1610	
18	20	$\frac{0}{-0.018}$	$\frac{+0.021}{0}$	$\frac{18}{+0.120}$	$\frac{20}{+0.221}$							1810	
20	23	$\frac{0}{-0.021}$	$\frac{+0.021}{0}$	$\frac{20}{+0.145}$	$\frac{23}{+0.221}$								
22	25	$\frac{0}{-0.021}$	$\frac{+0.021}{0}$	$\frac{22}{+0.145}$	$\frac{25}{+0.231}$								
24	27	$\frac{0}{-0.021}$	$\frac{+0.021}{0}$	$\frac{24}{+0.145}$	$\frac{27}{+0.231}$								
25	28	$\frac{0}{-0.021}$	$\frac{+0.021}{0}$	$\frac{25}{+0.170}$	$\frac{28}{+0.231}$								
28	32	$\frac{0}{-0.021}$	$\frac{+0.025}{0}$	$\frac{28}{+0.170}$	$\frac{32}{+0.290}$								
30	34	$\frac{0}{-0.021}$	$\frac{+0.025}{0}$	$\frac{30}{+0.170}$	$\frac{34}{+0.290}$								
32	36	$\frac{0}{-0.025}$	$\frac{+0.025}{0}$	$\frac{32}{+0.215}$	$\frac{36}{+0.290}$								
35	39	$\frac{0}{-0.025}$	$\frac{+0.025}{0}$	$\frac{35}{+0.215}$	$\frac{39}{+0.290}$								
38	42	$\frac{0}{-0.025}$	$\frac{+0.025}{0}$	$\frac{38}{+0.215}$	$\frac{42}{+0.340}$								
40	44	$\frac{0}{-0.025}$	$\frac{+0.025}{0}$	$\frac{40}{+0.215}$	$\frac{44}{+0.340}$								
45	50	$\frac{0}{-0.025}$	$\frac{+0.025}{0}$	$\frac{45}{+0.235}$	$\frac{50}{+0.340}$								
50	55	$\frac{0}{-0.025}$	$\frac{+0.030}{0}$	$\frac{50}{+0.235}$	$\frac{55}{+0.430}$								

Length L Tolerance $-\frac{0}{-0.5}$							I.D.
12	15	20	25	30	40	50	φd
							2
							3
							4
							5
							6
							7
0812	0815						8
0912	0915						9
1012	1015	1020					10
1212	1215	1220					12
1412	1415	1420					14
1512	1515	1520	1525	1530			15
1612	1615	1620	1625	1630			16
1812	1815	1820	1825	1830			18
	2015	2020	2025	2030			20
		2220		2230			22
	2415	2420	2425				24
	2515	2520	2525	2530			25
		2820	2825	2830			28
		3020	3025	3030	3040		30
		3220★		3230★	3240★		32
		3520	3525★	3530★	3540★		35
		3820		3830	3840		38
		4020	4025	4030	4040	4050	40
		4520		4530	4540	4550	45
		5020		5030	5040	5050	50